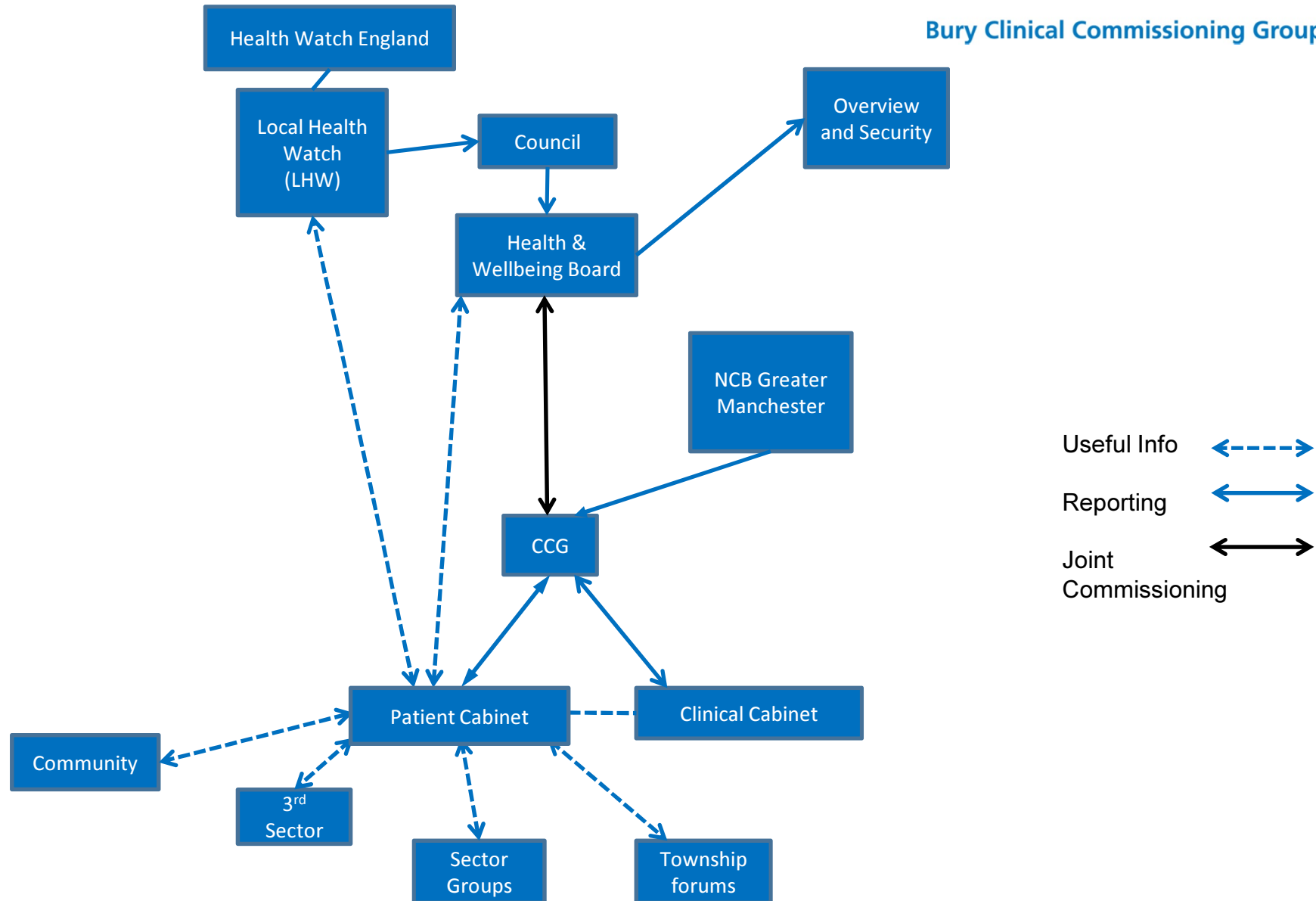


### Bury Clinical Commissioning Group



## Member Practices

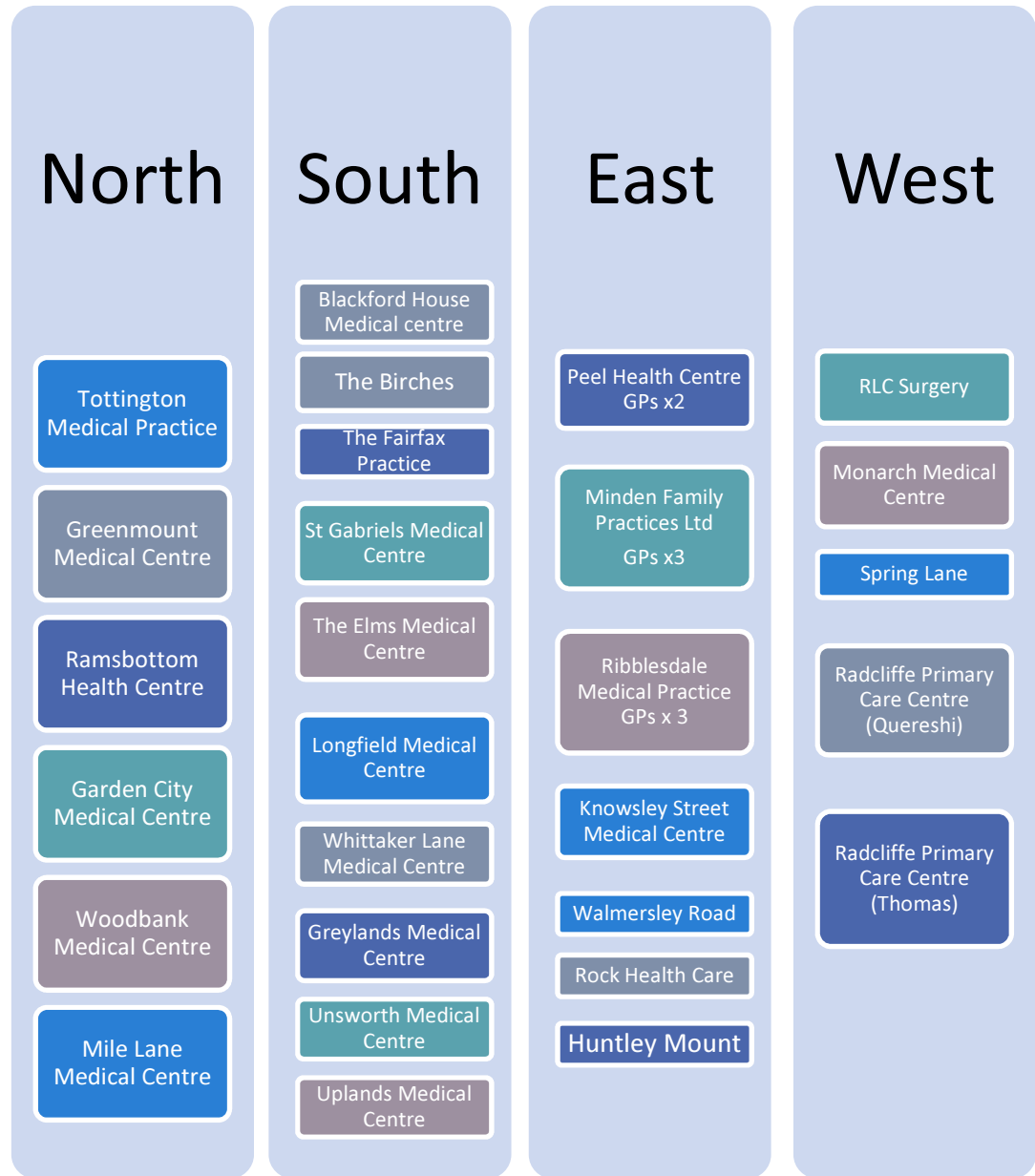
Each practice to nominate :

- Clinical Lead
- PM/Admin Lead

Responsible for disseminating information to practice staff

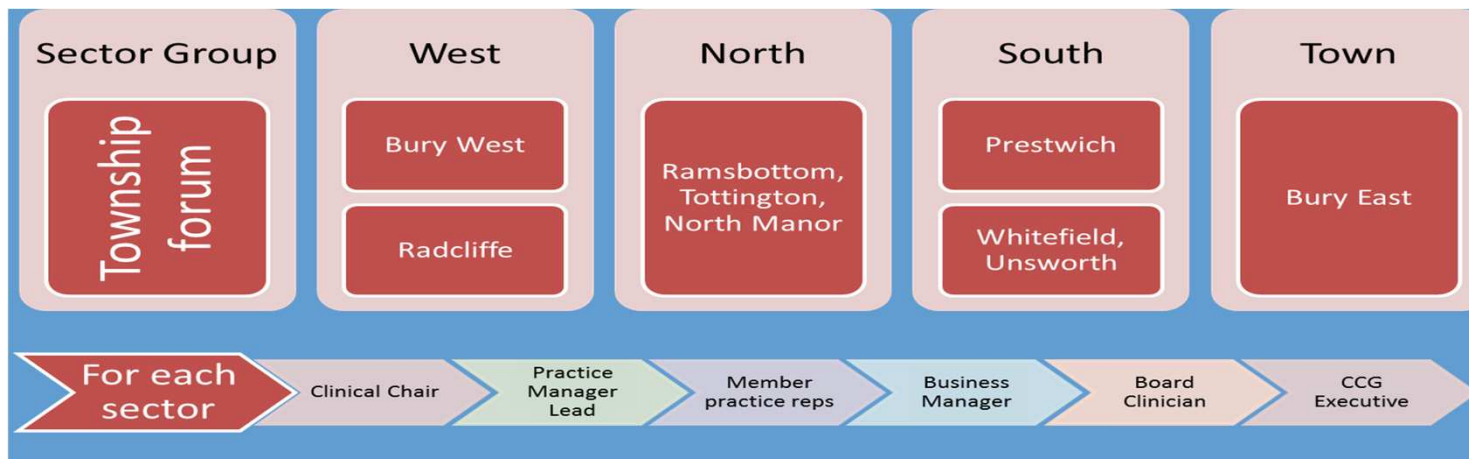
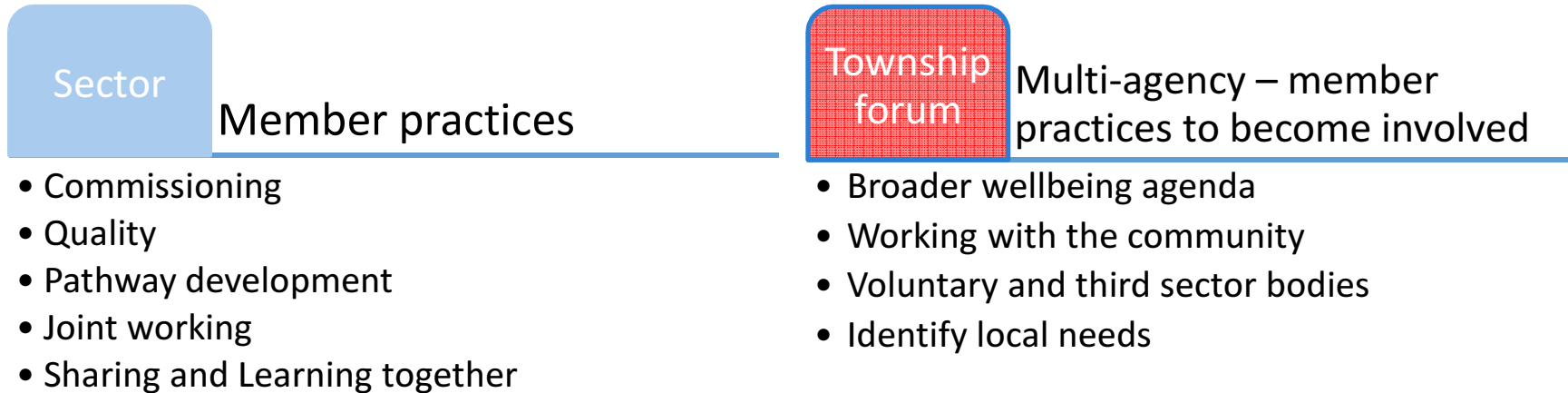
Providing feedback to CCG Management

Attending CCG Council and Sector Groups



# Locality Structure

Bury Clinical Commissioning Group



# Patient Cabinet - purpose

Bury Clinical Commissioning Group

- To provide the patients' and the public's perspective on issues of discussion and decision by the CCG
- To work in partnership with the CCG to develop services and initiatives from the perspective of the patients' experience
- To help involve members of the public in the development and planning of new services and future decision making
- To help ensure that the contribution made is as representative of as many patients and the public as possible and it is positive, encouraging and objective
- To work in partnership with the CCG to support and influence the development of patient information and determining policies for patient surveys and focus groups
- Membership of the Panel should aim to reflect the population of Bury
- Panel members will be required to declare any interests in relation to predicted points of discussion.
- The Panel Chair will be responsible for reporting findings and outcomes from the Panel to the CCG Board at its' formal meetings.
- To tackle health inequalities
- To ensure we get value for money from the services we commission
- To assist in ensuring that Bury communities are fully engaged

# Ongoing

- Recruiting 4 GP Sector Chairs
- Reshaping the Township Forums
- Formal CCG Structure out to consultation
- Recruitment of clinicians to lead Respiratory and Diabetes
- How to feed in the 'patient story' to the Board
- How do we link with local Health watch?



Bury Clinical Commissioning Group

# Questions?